**APPLICATION:**

A CLEVIS HANGER provides for sizeable loads to be supported and for an elevation adjustment depending upon the pipe diameter. The lower nut adjusts the piping to the proper elevation and the upper nut, when locked into position, prevents loosening due to vibration.

**CONSTRUCTION:**

A CLEVIS HANGER consists of a yoke and a support strap made from shaped Mild steel strip and a joining bolt. 15° swing in either direction allows pipe to easily feed through. Pipe will not pinch when installing. Engineered design aligns bolt holes for quicker overhead installation.

**MATERIAL:**

Mild Steel. Also other materials can be provided on request

**APPROVALS:**

ANSI/MSS SP-58 & SP-69(Type 1) **MSS**

Federal Specification WW-H-171E & A-A-1192A(Type 1)

**MAXIMUM TEMPERATURE:** 343°C(650°F)

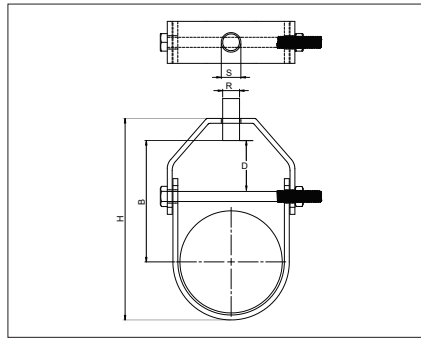
**FINISH AVAILABLE:**

Electro-Galvanized.

PRODUCT CODE	NOMINAL IN.	PIPE SIZE MM	PIPE OD (MM) D	MATERIAL HEIGHT H	DIMENSION (MM) TOP HOLE DIA. S	HANGER ROD SIZE (MM) R	CROSS BOLT DIA. (CRD )	MAX LOAD (KG)
TGCH00ULE0022*	1/2"	DN15	21.3	68	11	M10	M8	350
TGCH00UFE0027	3/4"	DN20	26.7	72	11	M10	M8	350
TGCH00UFE0034	1"	DN25	33.4	76	11	M10	M8	350
TGCH00UFE0042	1 1/4"	DN32	42.1	87	11	M10	M8	350
TGCH00UFE0048	1 1/2"	DN40	48.2	97	11	M10	M8	350
TGCH00UFE0060	2"	DN50	60.3	114	11	M10	M8	350
TGCH00UFE0073	2 1/2"	DN65	73.0	142	13	M12	M10	780
TGCH00UFE0089	3"	DN80	88.9	165	13	M12	M10	780
TGCH00UFE0114	4"	DN100	114.3	202	13	M12	M10	780
TGCH00UFE0141	5"	DN125	141.3	236	13	M12	M12	1250
TGCH00UFE0168	6"	DN150	168.3	278	13	M12	M12	1250
TGCH00UFE0219	8"	DN200	219.1	338	13	M12	M12	2100

**APPLICATION EXAMPLES:**

**NOTE :** \* Only UL Listed.

**APPLICATION:**

A CLEVIS HANGER provides for sizeable loads to be supported and for an elevation adjustment depending upon the pipe diameter. The lower nut adjusts the piping to the proper elevation and the upper nut, when locked into position, prevents loosening due to vibration.


**CONSTRUCTION:**

A CLEVIS HANGER consists of a yoke and a support strap made from shaped Mild steel strip and a joining bolt. 15° swing in either direction allows pipe to easily feed through. Pipe will not pinch when installing. Engineered design aligns bolt holes for quicker overhead installation.

**MATERIAL:**

Mild Steel. Also other materials can be provided on request

**APPROVALS:**

ANSI/MSS SP-58 & SP-69(Type 1) 

Federal Specification WW-H-171E & A-A-1192A(Type 1)

**MAXIMUM TEMPERATURE:** 343°C(650°F)

**FINISH AVAILABLE:**

Plain, Electro-Galvanized, Hot Dip Galvanized, Zinc Flake & Epoxy Coated.

PRODUCT CODE	NOMINAL IN.	PIPE SIZE MM	PIPE OD	MATERIAL	DIMENSION (MM)	HANGER ROD	CROSS BOLT	MAX LOAD (KG)
			(MM) D	HEIGHT H	TOP HOLE DIA. S	SIZE (MM) R	DIA. (CRD )	
TGCH0000E0022	1/2"	DN15	21.3	68	11	M10	M8	350
TGCH0000E0027	3/4"	DN20	26.7	72	11	M10	M8	350
TGCH0000E0034	1"	DN25	33.4	76	11	M10	M8	350
TGCH0000E0042	1 1/4"	DN32	42.1	87	11	M10	M8	350
TGCH0000E0048	1 1/2"	DN40	48.2	97	11	M10	M8	350
TGCH0000E0060	2"	DN50	60.3	114	11	M10	M8	350
TGCH0000E0073	2 1/2"	DN65	73.0	142	13	M12	M10	780
TGCH0000E0089	3"	DN80	88.9	165	13	M12	M10	780
TGCH0000E0114	4"	DN100	114.3	202	13	M12	M10	780
TGCH0000E0141	5"	DN125	141.3	236	13	M12	M12	1250
TGCH0000E0168	6"	DN150	168.3	278	13	M12	M12	1250
TGCH0000E0219	8"	DN200	219.1	338	13	M12	M12	2100
TGCH0000E0273	10"	DN250	273.1	419	17	M16	M16	2100
TGCH0000E0323	12"	DN300	323.8	490	21	M20	M20	2100
TGCH0000E0356	14"	DN350	355.6	556	21	M20	M20	3800
TGCH0000E0406	16"	DN400	406.4	610	25	M24	M20	3800
TGCH0000E0457	18"	DN450	457.2	675	25	M24	M24	4000
TGCH0000E0508	20"	DN500	508.0	715	32	M30	M24	4000
TGCH0000E0610	24"	DN 600	609.6	850	32	M30	M24	9400
TGCH0000E0762	30"	DN750	762.0	995	32	M30	M24	9400

**APPLICATION EXAMPLES:**