**APPLICATION:**

PIPE HANGER WITH EPDM LINING is recommended for non-insulated stationary pipelines in a horizontal position. It can be used for supporting pipes along with the roof.

CONSTRUCTION:

PIPE HANGER with EPDM lining consists of piece of mild steel shaped to wrap around the pipe. The selection of the proper PIPE HANGER WITH EPDM LINING depends upon load to be carried. Permits installation before and after pipe is in place. Reduces noise upto 18 dB.

MATERIAL:

Mild Steel. Also other materials can be provided on request

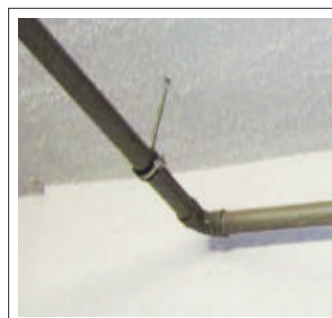
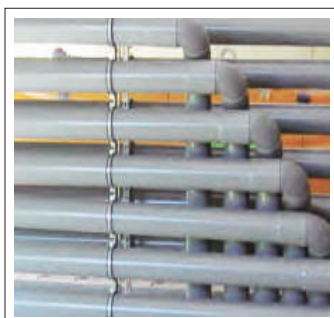
APPROVALS:

MAXIMUM TEMPERATURE: -20°C to 110°C

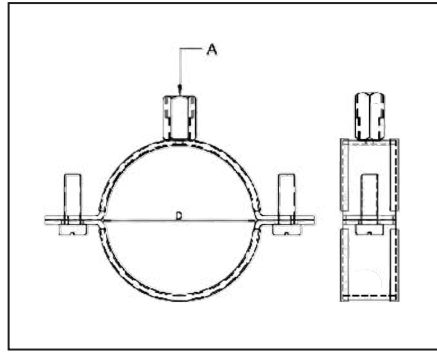
FINISH AVAILABLE:

Plain, Electro-Galvanized, Hot Dip Galvanized, Zinc Flake & Epoxy Coated.

PRODUCT CODE	NOMINAL IN.	PIPE SIZE MM	PIPE OD (MM)	RANGE (MM)	HANGER ROD SIZE (MM) (A)	SIDE SCREW SIZE	MAX LOAD (KG)
TGNCOLULE0022*	1/2"	DN15	21.3	20-25	M10	M6	460
TGNCOLUFE0027	3/4"	DN20	26.7	26-30	M10	M6	460
TGNCOLUFE0034	1"	DN25	33.4	32-36	M10	M6	460
TGNCOLUFE0042	1 1/4"	DN32	42.1	38-43	M10	M6	460
TGNCOLUFE0048	1 1/2"	DN40	48.2	47-51	M10	M6	460
TGNCOLUFE0060	2"	DN50	60.3	60-64	M10	M6	460
TGNCOLUFE0073	2 1/2"	DN65	73.0	74-80	M10	M6	570
TGNCOLUFE0089	3"	DN80	88.9	87-92	M10	M6	570

APPLICATION EXAMPLES:

NOTE : * Only UL Listed.

**APPLICATION:**

PIPE HANGER WITH EPDM LINING is recommended for non-insulated stationary pipelines in a horizontal position. It can be used for supporting pipes along with the roof.

CONSTRUCTION:

PIPE HANGER with EPDM lining consists of piece of mild steel shaped to wrap around the pipe. The selection of the proper PIPE HANGER WITH EPDM LINING depends upon the temperature of the piping system and load to be carried. Permits installation before and after pipe is in place. Reduces noise upto 18 dB.

MATERIAL:

Mild Steel. Also other materials can be provided on request

MAXIMUM TEMPERATURE: -20°C to 110°C

FINISH AVAILABLE:

Plain, Electro-Galvanized, Hot Dip Galvanized & Zinc Flake.

PRODUCT CODE	NOMINAL IN.	PIPE SIZE MM	PIPE OD (MM)	RANGE (MM)	NUT SIZE [A]	SIDE SCREW SIZE	MAX LOAD (KG)
TGNCOL00E0017	3/8"	DN10	17.1	15-19	M8 X M10	M6	450
TGNCOL00E0022	1/2"	DN15	21.3	20-25	M8 X M10	M6	450
TGNCOL00E0027	3/4"	DN20	26.7	26-30	M8 X M10	M6	450
TGNCOL00E0034	1"	DN25	33.4	32-36	M8 X M10	M6	450
TGNCOL00E0042	1 1/4"	DN32	42.1	38-43	M8 X M10	M6	450
TGNCOL00E0048	1 1/2"	DN40	48.2	47-51	M8 X M10	M6	450
TGNCOL00E0054	-	-	54	53-58	M8 X M10	M6	450
TGNCOL00E0060	2"	DN50	60.3	60-64	M8 X M10	M6	450
TGNCOL00E0070	-	-	70	68-72	M8 X M10	M6	450
TGNCOL00E0073	2 1/2"	DN65	73.0	74-80	M8 X M10	M6	600
TGNCOL00E0083	-	-	83	81-86	M8 X M10	M6	600
TGNCOL00E0089	3"	DN80	88.9	87-92	M8 X M10	M6	600
TGNCOL00E0102	3 1/2"	DN90	101.6	99-105	M8 X M10	M6	600
TGNCOL00E0110	-	-	110	107-112	M8 X M10	M6	600
TGNCOL00E0114	4"	DN100	114.3	113-118	M8 X M10	M6	600
TGNCOL00E0125	-	-	125	125-130	M8 X M10	M6	600
TGNCOL00E0141	5"	DN125	141.3	138-142	M8 X M10	M6	600
TGNCOL00E0160	-	-	160	159-166	M8 X M10	M6	600
TGNCOL00E0168	6"	DN150	168.3	168-172	M8 X M10	M8	600
TGNCOL00E0219	8"	DN200	219.1	215-220	M8 X M10	M8	950
TGNCOL00E0273	10"	DN250	273.0	269-274	M8 X M10	M8	950

APPLICATION EXAMPLES: