**APPLICATION:**

PIPE ROLLER STAND is recommended to support pipes in applications where horizontal movement, due to expansion and contraction will occur.

ROLLER MATERIALS:

Malleable Iron.
Mild Steel.

MATERIALS:

Mild Steel. Also other materials can be provided on request

APPROVALS:

ANSI/MSS SP-58 & SP-69(Type 45) 

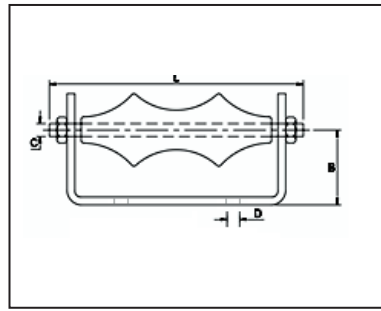
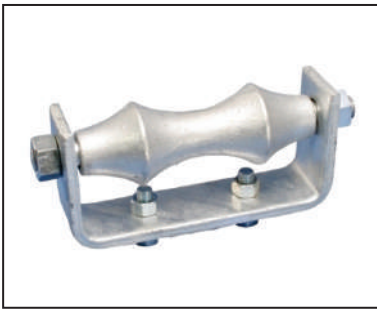
Federal Specification WW-H-171E & A-A-1192A (Type 44)

FINISH AVAILABLE:

Plain, Electro-Galvanized & Hot Dip Galvanized & Zinc Flake.

PRODUCT CODE	NOMINAL IN.	PIPE SIZE MM	PIPE OD (MM)	S	BASE PLATE		R	Q	P
					L	W			
TGPRS000E0060	2"	DN50	60	80	90	145	50	40	100
TGPRS000E0073	2 1/2"	DN65	73	90	100	145	50	48	100
TGPRS000E0089	3"	DN80	89	95	105	145	50	55	100
TGPRS000E0102	3 1/2"	DN90	102	100	110	145	50	61	100
TGPRS000E0114	4"	DN100	114	115	125	155	50	72	115
TGPRS000E0141	5"	DN125	141	130	140	155	55	85	115
TGPRS000E0168	6"	DN150	168	160	170	165	65	100	125
TGPRS000E0219	8"	DN200	219	190	200	170	75	125	130
TGPRS000E0273	10"	DN250	273	225	235	170	90	155	130
TGPRS000E0323	12"	DN300	323	260	270	170	90	180	130
TGPRS000E0356	14"	DN350	356	275	285	170	120	197	130
TGPRS000E0406	16"	DN400	406	300	310	205	120	220	165
TGPRS000E0457	18"	DN450	457	345	355	205	130	250	165
TGPRS000E0508	20"	DN500	508	370	380	205	130	275	165
TGPRS000E0610	24"	DN600	610	480	490	230	160	330	190
TGPRS000E0660	26"	DN650	661	500	510	245	180	355	200
TGPRS000E0711	28"	DN700	712	530	540	245	180	385	200
TGPRS000E0762	30"	DN750	755	550	560	245	200	405	200

APPLICATION EXAMPLES:

**APPLICATION:**

PIPE ROLLER CHAIR is recommended to support pipes where longitudinal movement due to expansion and contraction may occur, but where no vertical adjustment is required.

MAXIMUM TEMPERATURE: 343°C (650°F)

MATERIALS:

Mild Steel. Also other materials can be provided on request

APPROVALS:

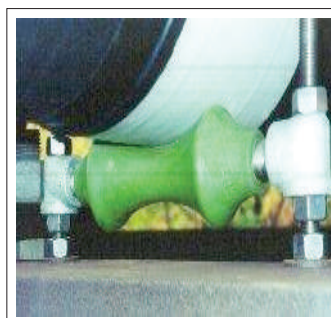
ANSI/MSS SP-58 & SP-69(Type 44) 

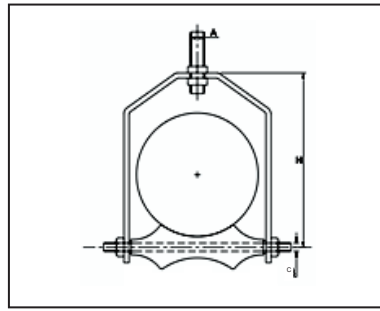
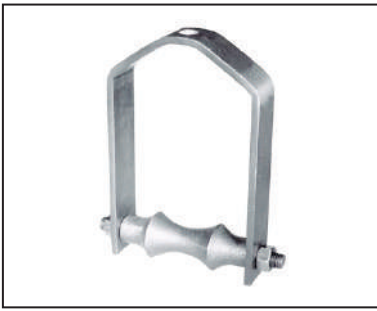
Federal Specification WW-H-171E & A-A-1192A (Type 45)

FINISH AVAILABLE:

Plain, Electro-Galvanized & Hot Dip Galvanized & Zinc Flake.

PRODUCT CODE	NPS (IN)	NPS (MM)	WIDTH	THICKNESS	DIMENSIONS (MM)			
					B	C	D	L
TGPRC000E0060	2"	60	30	6	40	M12	M12	115
TGPRC000E0073	2 1/2"	73	30	6	40	M12	M12	125
TGPRC000E0089	3"	89	30	6	45	M12	M12	145
TGPRC000E0102	3 1/2"	102	30	6	45	M12	M12	160
TGPRC000E0114	4"	114	40	10	55	M12	M16	175
TGPRC000E0141	5"	141	40	10	55	M12	M16	200
TGPRC000E0168	6"	168	50	10	65	M20	M16	245
TGPRC000E0219	8"	219	50	10	75	M24	M20	305
TGPRC000E0273	10"	273	50	12	90	M24	M20	365
TGPRC000E0323	12"	323	50	12	90	M24	M20	425
TGPRC000E0356	14"	356	50	12	120	M24	M24	460
TGPRC000E0406	16"	406	75	12	120	M24	M24	515
TGPRC000E0457	18"	457	75	12	130	M33	M24	580
TGPRC000E0508	20"	508	75	12	130	M33	M24	630
TGPRC000E0610	24"	610	100	16	160	M50	M24	780
TGPRC000E0660	26"	661	100	16	180	M50	M24	845
TGPRC000E0711	28"	712	100	16	180	M50	M24	895
TGPRC000E0762	30"	755	100	16	200	M50	M24	940

APPLICATION EXAMPLES:

**APPLICATION:**

ADJUSTABLE ROLLER HANGER is recommended for suspended pipes in applications where horizontal movement, due to expansion and contraction, will occur and vertical adjustment is necessary.

FINISH AVAILABLE:

Plain, Electro-Galvanized & Hot Dip Galvanized & Zinc Flake.

MATERIALS:

Mild Steel. Also other materials can be provided on request

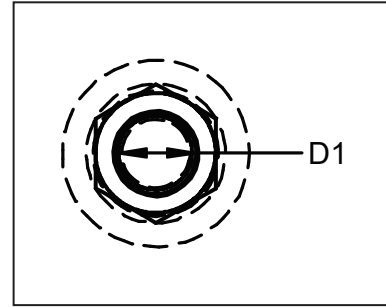
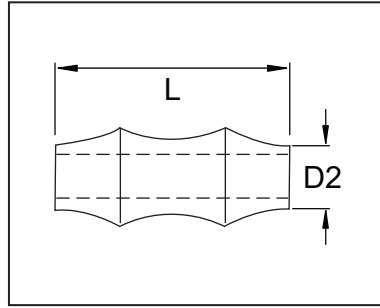
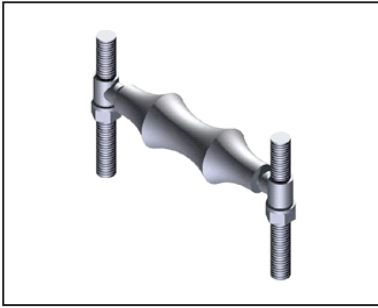
APPROVALS:

ANSI/MSS SP-58 & SP-69(Type 43) 

Federal Specification WW-H-171E & A-A-1192A (Type 44)

PRODUCT CODE	NOMINAL IN.	PIPE SIZE MM	PIPE OD (MM)	DIMENSIONS (MM)		
				A	C	H
TGARH000E0060	2"	DN50	60	M12	M12 x 115	105
TGARH000E0073	2 1/2"	DN65	73	M12	M12 x 125	125
TGARH000E0089	3"	DN80	89	M12	M12 x 145	140
TGARH000E0102	3 1/2"	DN90	102	M16	M12 x 160	155
TGARH000E0114	4"	DN100	114	M16	M12 x 175	170
TGARH000E0141	5"	DN125	141	M20	M12 x 200	200
TGARH000E0168	6"	DN150	168	M20	M20 x 245	230
TGARH000E0219	8"	DN200	219	M20	M24 x 305	290
TGARH000E0273	10"	DN250	273	M24	M24 X 365	350
TGARH000E0323	12"	DN300	323	M24	M24 x 425	400
TGARH000E0356	14"	DN350	356	M24	M24 x 460	445
TGARH000E0406	16"	DN400	406	M24	M24 x 515	500
TGARH000E0457	18"	DN450	457	M30	M33 x 580	555
TGARH000E0508	20"	DN500	508	M30	M33 x 630	610
TGARH000E0610	24"	DN600	610	M30	M50 x 780	725
TGARH000E0660	26"	DN350	661	M36	M50 x 845	785
TGARH000E0711	28"	DN700	712	M36	M50 x 895	840
TGARH000E0762	30"	DN750	755	M36	M50 x 940	885

APPLICATION EXAMPLES:

**APPLICATION:**

PIPE ROLLER is recommended for supporting pipe in applications where horizontal movement, due to expansion and contraction, will occur.

ROLLER MATERIALS:

Malleable Iron, Mild Steel also available.

MATERIALS:

Mild Steel. Also other materials can be provided on request

APPROVALS:

ANSI/MSS SP-58 & SP-69(Type 41) 

Federal Specification WW-H-171E & A-A-1192A (Type 42)

FINISH AVAILABLE:

Plain, Electro-Galvanized & Hot Dip Galvanized & Zinc Flake.

PRODUCT CODE	NOMINAL IN.	PIPE SIZE MM	PIPE OD (MM)	DIMENSIONS (MM)			
				D	L	D1	D2
TGPR0000E0060	2"	DN50	60	27.90	66	20	18
TGPR0000E0073	2 1/2"	DN65	73	32.05	79	22	20
TGPR0000E0089	3"	DN80	89	33.92	95	22	20
TGPR0000E0102	3 1/2"	DN90	102	35.67	108	22	20
TGPR0000E0114	4"	DN100	114	41.41	121	26	24
TGPR0000E0141	5"	DN125	141	48.89	148	30	28
TGPR0000E0168	6"	DN150	168	58.51	175	36	34
TGPR0000E0219	8"	DN200	219	67.34	227	38	36
TGPR0000E0273	10"	DN250	273	80.58	281	44	42
TGPR0000E0323	12"	DN300	323	93.27	330	50	48
TGPR0000E0356	14"	DN350	356	115.69	362	68	66
TGPR0000E0406	16"	DN400	406	122.39	413	68	66
TGPR0000E0457	18"	DN450	457	131.23	464	70	68
TGPR0000E0508	20"	DN500	508	144.06	514	76	74
TGPR0000E0610	24"	DN600	610	173.72	616	92	90
TGPR0000E0660	26"	DN650	661	188.56	669	100	98
TGPR0000E0711	28"	DN700	712	201.39	722	106	104
TGPR0000E0762	30"	DN750	755	215.15	768	114	112

APPLICATION EXAMPLES: